

A PLAT OF MONARCH CLUB DRIVE

BEING PLAT NO. 19 "A", MARTIN DOWNS, A P.U.D. BEING A PORTION OF SECTION 7,
TOWNSHIP 38 SOUTH, RANGE 41 EAST AND A REPLAT OF MONARCH CLUB DRIVE
(PLAT 19 MARTIN DOWNS P.U.D.) AS RECORDED IN PLAT BOOK 10 PAGE 72,
JUNE 1987 AND A REPLAT OF A PORTION OF PLAT 29 MARTIN DOWNS P.U.D. AS RECORDED
IN PLAT BOOK , PAGE , PUBLIC RECORDS OF MARTIN COUNTY, FLORIDA

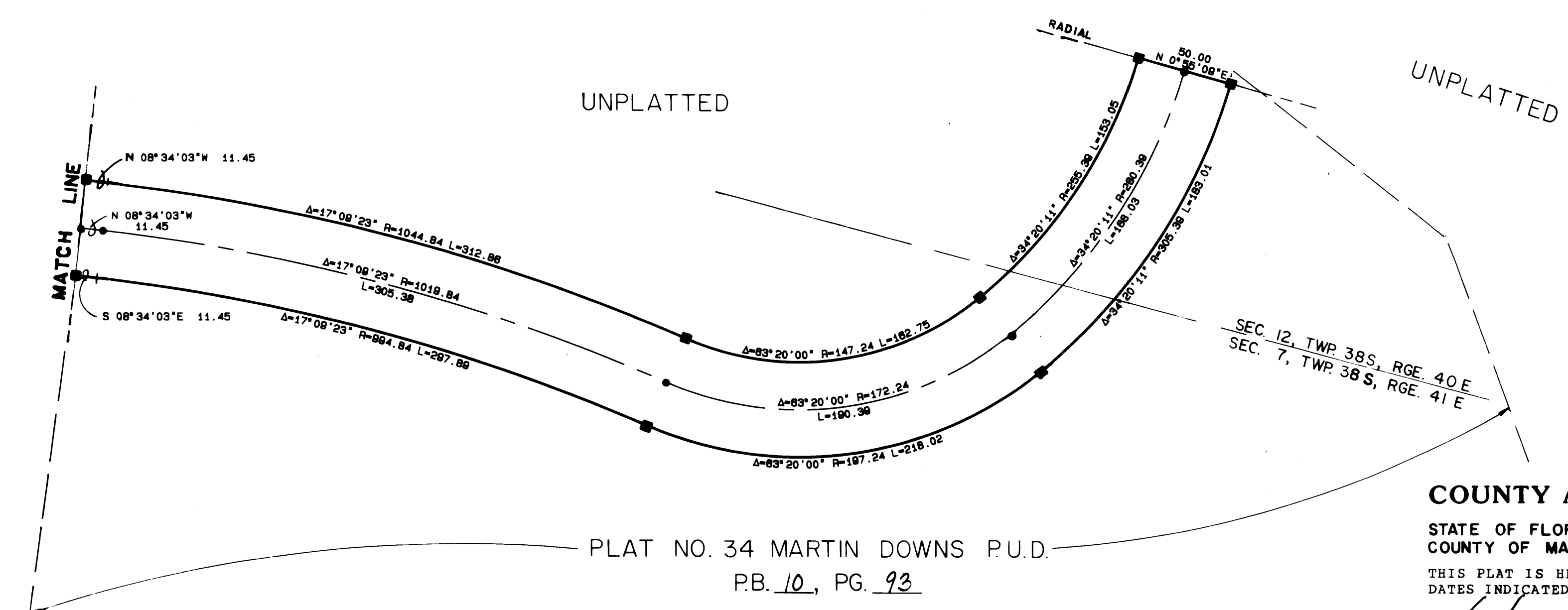
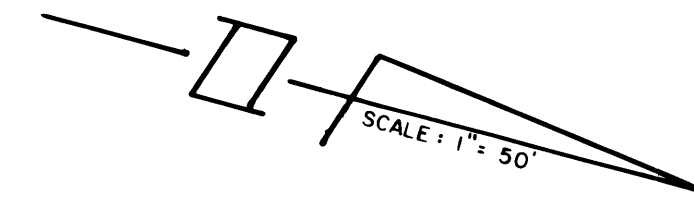
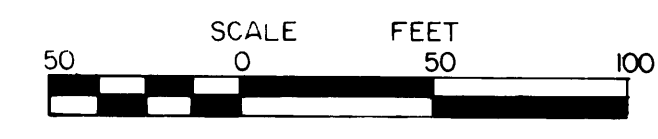
I, MARSHA STILLER, CLERK OF THE CIRCUIT COURT OF MARTIN COUNTY, FLORIDA, HEREBY CERTIFY THAT THIS PLAT WAS FILED FOR RECORD IN PLAT BOOK 10, PAGE 92, MARTIN COUNTY, FLORIDA, PUBLIC RECORDS, THIS DAY OF _____, 1987.

MARSHA STILLER, CLERK
CIRCUIT COURT
MARTIN COUNTY, FLORIDA.

BY _____
DEPUTY CLERK

FILE NO. _____

(CIRCUIT COURT SEAL)



- = DENOTES SET PERMANENT REFERENCE MONUMENT (P.R.M.)
- = " PERMANENT CONTROL POINT (P.C.P.)

SURVEYOR'S CERTIFICATE

STATE OF FLORIDA
COUNTY OF MARTIN

I, DAVID M. JONES, SO HEREBY CERTIFY THAT THIS PLAT OF MONARCH CLUB DRIVE (PLAT NO. 19A) IS A TRUE AND CORRECT REPRESENTATION OF A SURVEY MADE UNDER MY RESPONSIBLE DIRECTION AND SUPERVISION AND THAT SAID SURVEY IS ACCURATE TO THE BEST OF MY KNOWLEDGE AND BELIEF AND THAT PERMANENT REFERENCE MONUMENTS HAVE BEEN PLACED, AS REQUIRED BY LAW, AND THAT PERMANENT CONTROL POINTS WILL BE SET FOR THE REQUIRED IMPROVEMENTS AND FURTHER THAT THE SURVEY DATA COMPLIES WITH ALL THE REQUIREMENTS OF CHAPTER 177, PART 1, FLORIDA STATUTES, AS AMENDED AND ORDINANCES OF MARTIN COUNTY, FLORIDA.

David M. Jones
DAVID M. JONES
REGISTERED LAND SURVEYOR
FLORIDA CERTIFICATION NO. 3989

COUNTY APPROVAL

STATE OF FLORIDA
COUNTY OF MARTIN

THIS PLAT IS HEREBY APPROVED BY THE UNDERSIGNED ON THE DATE, OR DATES INDICATED.

09/7/1987
DATE
COUNTY ENGINEER

August 25, 1987
DATE
COUNTY ATTORNEY

August 25, 1987
DATE
CHAIRMAN - PLANNING & ZONING
COMMISSION OF MARTIN COUNTY, FLA.

August 25, 1987
DATE
CHAIRMAN - BOARD OF COUNTY
COMMISSIONERS OF MARTIN COUNTY, FLA.

ATTEST: _____
CLERK

LINDAHL BROWNING FERRARI & HELLSTROM, INC. CONSULTING ENGINEERS, PLANNERS & SURVEYORS P.O. BOX 727 90 CENTRAL PARKWAY JUPITER, FLORIDA 33468 SUITE 420 STUART, FLORIDA 34987 790 SOUTH 25TH STREET SUITE 205 FORT PIERCE, FLORIDA 33902	3	3
--	---	---